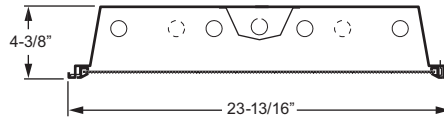
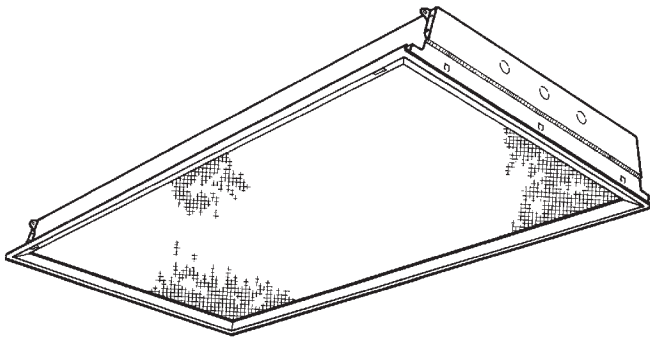


2' x 4' STATIC TROFFER

SERIES **50** STATIC
 VOLTAGE TYPE JOB _____



SPECIFICATIONS

- **Housing** – 22-gauge die-formed C.R.S.
- **Door Frame** – 20-gauge C.R.S. or .050" extruded aluminum, flat or regress, with mitered corners. T-slot steel hinge allows reversible hinging and latching.
- **Shielding** – #12 pattern, .125" acrylic overlay standard—other patterns and thicknesses available.
- **Finish** – 92% minimum average reflective white powder coat with multi-stage iron/phosphate prepared metal.
- **Electrical** – Electronic ballast standard, instant start T8, programmed start T5, rated Class P.
- **Labels** – UL/CUL listed as recessed fluorescent luminaire suitable for dry or damp locations.
- **Mounting** – NEMA Type "G" standard. NEMA Type "F" available.

FEATURES

- Fully-enclosed spring-loaded cam latches allow years of hassle-free maintenance.
- T-slot steel hinge ensures positive retention when door is opened.
- Meets many energy rebate requirements with the high efficiency HIEF option.
- 4-3/8" deep housing eliminates lens shadowing.
- Deep reinforcement ribs provide added strength.
- Rolled-edge channel adds superior strength.
- Optional anti-microbial powder coating available to prevent the spread of dangerous micro-organisms and suppress the growth of mold and bacteria.
- Integral T-bar clips quickly secure fixture to structure.
- Field convertible to NEMA Type "F".
- Fully gasketed door minimizes contaminants.
- All parts painted after fabrication to facilitate installation, increase efficiency, and inhibit corrosion.
- This fixture is proudly made in the USA.

ORDERING INFORMATION

Submittal

EXAMPLE: **50 G - S 2 4 - 3 32 - S A12125 - OPTIONS - EB3 - 120**

SERIES	
50	Static Troffer (No air handling)
CEILING TYPE	
G	NEMA Type "G"
F	NEMA Type "F" (field convertible)
FIXTURE STYLE	
S	Full door frame, no reveal
NOMINAL WIDTH	
2	2'
NOMINAL LENGTH	
4	4'
TOTAL LAMPS	
2, 3, 4, or 6	

LAMP WATTAGE/TYPE	
28T55	4', 28-watt T5
32	4', 32-watt T8
54T5H	4', 54-watt T5HO (4 lamps max.)
DOOR FRAME TYPE	
S	White Flat steel
F	White Flat aluminum
R	White Regress aluminum
SB	Black flat steel
FB	Black Flat aluminum
RB	Black Regress aluminum
SHIELDING	
A12125	#12 pattern acrylic, .125" thick
A19156	#19 pattern acrylic, .156" thick
PC1SS	Nominal 1/2"x1/2"x1/2" silver polystyrene
PC2SS	Nominal 1-1/2"x1-1/2"x1" silver polystyrene

OPTIONS			
HIEF	High Efficiency (T8 only)		
F338	6', 3/8" flex, 3 conductor, No. 18 AWG		
AMW	Anti-microbial white finish		
BALLAST TYPE			
EB2	2-lamp electronic ballast		
EB3	3-lamp electronic ballast		
EB4	4-lamp electronic ballast		
EB2/2	(2) 2-lamp electronic ballasts		
EB3/3	(2) 3-lamp electronic ballasts		
EB4/2	(1) 4-lamp & (1) 2-lamp electronic ballast		
VOLTAGE			
120	120V	UNV	120 - 277V
277	277V	347	347V

Note: For more options/accessories, ballast combinations, and product details, please consult factory.



FLUORESCENT LIGHTING

50
STATIC

SERIES

PHOTOMETRY INFORMATION

STANDARD

Williams Catalog #50G-S24-332-SAI12125-EB3 Test Report #8417.0, Dated 08/18/95 Ballast Factor: 1.0
Lamp Type: F32T8/735/RS Lamp Quantity: 3

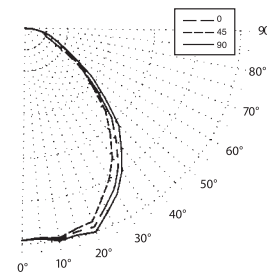
CANDLEPOWER DISTRIBUTION

VERT. ANG.	HORIZONTAL ANGLE			ZONAL LUMENS
	0	45	90	
0	2809.	2809.	2809.	
5	2781.	2778.	2789.	265.6
15	2740.	2780.	2820.	788.4
25	2478.	2589.	2665.	1194.5
35	2055.	2198.	2282.	1372.1
45	1527.	1643.	1775.	1275.1
55	935.	956.	1083.	889.3
65	537.	405.	556.	466.7
75	328.	263.	338.	301.8
85	119.	119.	130.	133.5
90	0.	0.	0.	

LUMEN SUMMARY

ZONE	LUMENS	% LAMP	% FIXTURE
0 - 30	2248.	26.3	33.6
0 - 40	3621.	42.3	54.1
0 - 60	5785.	67.7	86.5
0 - 90	6687.	78.2	100.0
90 - 120	0.	0.0	0.0
90 - 130	0.	0.0	0.0
90 - 150	0.	0.0	0.0
90 - 180	0.	0.0	0.0
0 - 180	6687.	78.2	100.0

TOTAL LUMINAIRE OPTICAL EFFICIENCY = 78.2%
SPACING CRITERIA: END = 12 ACROSS = 13



HIEF OPTION

Williams Catalog #50G-S24-232-SAI12125-HIEF-EB2 Test Report #12329.1, Dated 06/23/04 Ballast Factor: 1.0
Lamp Type: F32T8/835/RS Lamp Quantity: 2

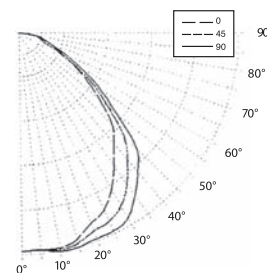
CANDLEPOWER DISTRIBUTION

VERT. ANG.	HORIZONTAL ANGLE			ZONAL LUMENS
	0	45	90	
0	1956.	1956.	1956.	
5	1950.	1950.	1953.	186.3
15	1918.	1955.	1990.	554.0
25	1760.	1868.	1962.	862.8
35	1468.	1668.	1794.	1034.6
45	1182.	1326.	1487.	1029.9
55	729.	800.	880.	722.1
65	401.	366.	456.	393.9
75	239.	198.	225.	224.5
85	88.	86.	78.	95.7
90	0.	0.	0.	

LUMEN SUMMARY

ZONE	LUMENS	% LAMP	% FIXTURE
0 - 30	1603.	27.2	31.4
0 - 40	2638.	44.7	51.7
0 - 60	4390.	74.4	86.0
0 - 90	5104.	86.5	100.0
90 - 120	0.	0.0	0.0
90 - 130	0.	0.0	0.0
90 - 150	0.	0.0	0.0
90 - 180	0.	0.0	0.0
0 - 180	5104.	86.5	100.0

TOTAL LUMINAIRE OPTICAL EFFICIENCY = 86.5%
SPACING CRITERIA: END = 12 DIAG. = 13 ACROSS = 14



HIEF OPTION

Williams Catalog #50G-S24-332-SAI12125-HIEF-EB3 Test Report #12252.1, Dated 03/31/04 Ballast Factor: 1.0
Lamp Type: F32T8/835/RS Lamp Quantity: 3

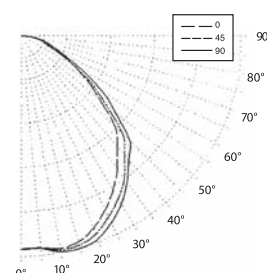
CANDLEPOWER DISTRIBUTION

VERT. ANG.	HORIZONTAL ANGLE			ZONAL LUMENS
	0	45	90	
0	2889.	2889.	2889.	
5	2885.	2890.	2894.	275.9
15	2901.	2947.	2991.	835.2
25	2635.	2738.	2824.	1265.6
35	2236.	2396.	2459.	1486.6
45	1786.	1921.	2055.	1486.6
55	1077.	1145.	1315.	1051.0
65	601.	544.	645.	580.2
75	321.	288.	355.	327.0
85	115.	125.	132.	139.6
90	14.	23.	23.	

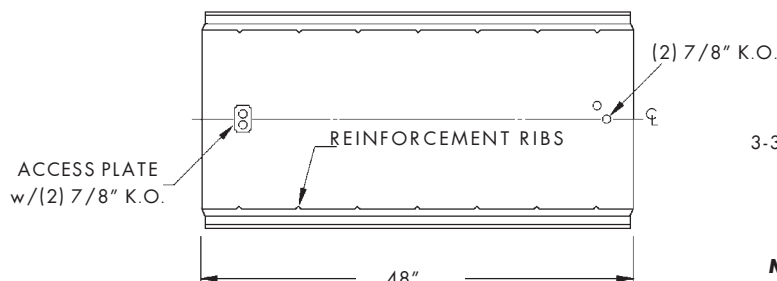
LUMEN SUMMARY

ZONE	LUMENS	% LAMP	% FIXTURE
0 - 30	2377.	26.9	31.9
0 - 40	3864.	43.7	51.9
0 - 60	6401.	72.3	85.9
0 - 90	7448.	84.2	100.0
90 - 120	0.	0.0	0.0
90 - 130	0.	0.0	0.0
90 - 150	0.	0.0	0.0
90 - 180	0.	0.0	0.0
0 - 180	7448.	84.2	100.0

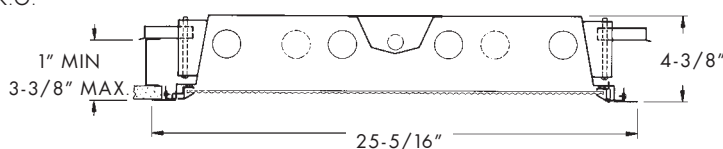
TOTAL LUMINAIRE OPTICAL EFFICIENCY = 84.2%
SPACING CRITERIA: END = 13 DIAG. = 13 ACROSS = 13



BACK VIEW



CROSS SECTION
NEMA TYPE "F"
INSTALLATION



MAXIMUM RECOMMENDED CEILING OPENING IS 24-3/8" X 48-3/8"
For continuous row mounting, add 49-5/16" for each additional fixture to obtain ceiling opening. 1-5/16" between end plates.



H. E. WILLIAMS, INC.